

### New Jersey Initial Unemployment Claims by Industry - week ending 02/06/21

NAICS	CLAIMS	DESCRIPTION	Percentage of Weekly Claims
238	1,467	Specialty trade contractors	9.1%
561	1,241	Administrative and support services	7.7%
237	866	Heavy and civil engineering construction	5.4%
722	792	Food service and drinking places	4.9%
621	479	Ambulatory health care services (Dr. and Dentist offices)	3.0%
541	431	Professional, sci., and tech.services (lawyers, accts., engineers, archt, sci.research)	2.7%
611	389	Educational services	2.4%
236	307	Construction of buildings	1.9%
493	264	Warehousing and storage	1.6%
624	257	Social assistance	1.6%
452	253	General Merchandise Stores	1.6%
812	227	Personal and laundry services (Hair, nail salons, barbers, dry cleaners)	1.4%
721	216	Accommodations	1.3%
327	210	Nonmetallic mineral product mfg.	1.3%
445	209	Food and beverage stores	1.3%
713	207	Amusement, gambling, recreation	1.3%
423	201	Merchant Wholesalers, Durable Goods	1.2%
448	189	Clothing and clothing accessory stores	1.2%
485	170	Transit and ground passenger transportation	1.1%
492	165	Couriers and messengers	1.0%

Prepared by: NJDOL, Office of Research and Information, Division of Economic & Demographic Research 02/08/21

### New Jersey Continued Unemployment Claims by Industry - 02/06/21

NAICS	CLAIMS	DESCRIPTION	Percentage of Total Claims	Percent of Industry Total Employment
561	31,126	Administrative and support services	5.7%	11.9%
722	30,236	Food service and drinking places	5.6%	11.8%
621	11,787	Ambulatory health care services (Dr. and Dentist offices)	2.2%	4.8%
238	11,336	Specialty trade contractors	2.1%	11.4%
541	10,574	Professional, sci., and tech.services (lawyers, accts., engineers, archt, sci.research)	1.9%	3.4%
721	9,956	Accommodations	1.8%	20.6%
611	9,866	Educational services	1.8%	2.5%
812	7,535	Personal and laundry services (Hair, nail salons, barbers, dry cleaners)	1.4%	11.9%
624	7,229	Social assistance	1.3%	6.4%
485	6,028	Transit and ground passenger transportation	1.1%	19.7%
713	5,556	Amusement, gambling, recreation	1.0%	12.0%
423	5,149	Merchant Wholesalers, Durable Goods	0.9%	4.7%
424	4,458	Merchant Wholesalers, Nondurable Goods	0.8%	4.9%
452	4,279	General Merchandise Stores	0.8%	6.2%
445	4,071	Food and beverage stores	0.7%	3.7%
493	3,809	Warehousing and storage	0.7%	6.0%
623	3,780	Nursing and residential care facilities	0.7%	3.7%
448	3,766	Clothing and clothing accessory stores	0.7%	8.6%
237	3,560	Heavy and civil engineering construction	0.7%	17.1%
441	3,436	Motor vehicle and parts dealers	0.6%	7.0%

Prepared by: NJDOL, Office of Research and Information, Division of Economic & Demographic Research 02/08/21

Claimants by Company Size Class 1Q2020				
Initials Week Ending 02/06/21			Continued 02/06/21	
SIZE CLASS	Initial Claims	% of Total	Continued Claims	% of Total
Unknown	4,723	29.27%	305,846	56.28%
5 or less	1,375	8.52%	32,853	6.04%
6 to 10	760	4.71%	16,753	3.08%
11 to 25	1,331	8.25%	28,500	5.24%
26 to 50	1,324	8.21%	24,259	4.46%
51 to 100	1,156	7.16%	22,554	4.15%
101 to 500	2,635	16.33%	48,391	8.90%
Over 500	2,830	17.54%	64,323	11.84%
Prepared by: NJDOL, Office of Research and Information, Division of Economic & Demographic Research 02/08/21				

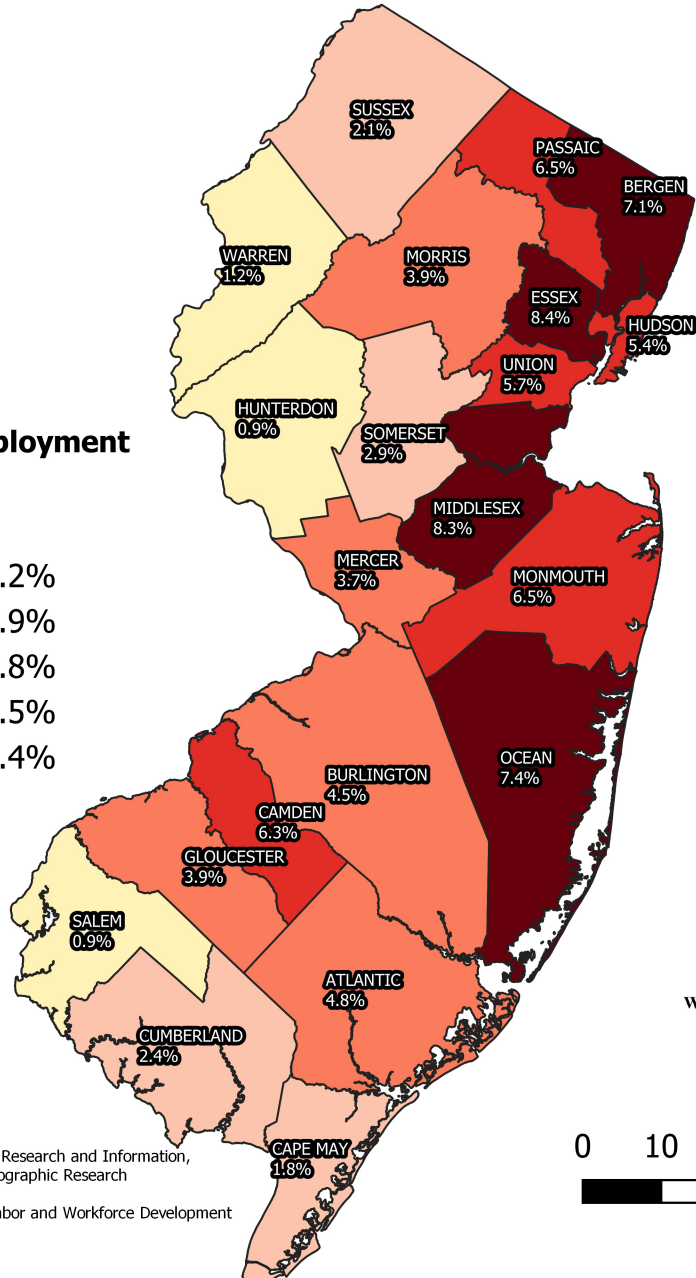
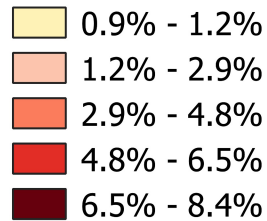
N. J. Initial Unemployment Claims by County week ending 2/6/2021		
County of Residence	Claims	Percent of Total
Atlantic	777	4.8%
Bergen	1,145	7.1%
Burlington	726	4.5%
Camden	1,009	6.3%
Cape May	292	1.8%
Cumberland	394	2.4%
Essex	1,356	8.4%
Gloucester	622	3.9%
Hudson	868	5.4%
Hunterdon	151	0.9%
Mercer	605	3.7%
Middlesex	1,332	8.3%
Monmouth	1,045	6.5%
Morris	634	3.9%
Ocean	1,201	7.4%
Passaic	1,044	6.5%
Salem	143	0.9%
Somerset	462	2.9%
Sussex	333	2.1%
Union	924	5.7%
Warren	194	1.2%
New Jersey Total	15,257	94.6%
Out-of-State Filers	877	5.4%
<b>Grand Total</b>	<b><u>16,134</u></b>	<b><u>100.0%</u></b>
Prepared by: Office of Research and Information, Division of Economic & Demographic Research 2/8/2021		

N. J. UI Continued Claimants by County week ending 2/6/21		
County of Residence	Claimants	Percent of Total
Atlantic	25,372	4.7%
Bergen	50,515	9.3%
Burlington	20,806	3.8%
Camden	31,891	5.9%
Cape May	7,656	1.4%
Cumberland	9,432	1.7%
Essex	55,212	10.2%
Gloucester	14,701	2.7%
Hudson	42,301	7.8%
Hunterdon	4,387	0.8%
Mercer	18,179	3.3%
Middlesex	45,926	8.5%
Monmouth	32,831	6.0%
Morris	20,686	3.8%
Ocean	30,578	5.6%
Passaic	43,757	8.1%
Salem	3,433	0.6%
Somerset	14,532	2.7%
Sussex	7,279	1.3%
Union	33,002	6.1%
Warren	4,847	0.9%
New Jersey Total	517,323	95.2%
Out-of-State Filers	26,156	4.8%
<b>Grand Total</b>	<b><u>543,479</u></b>	<b><u>100.0%</u></b>
Prepared by: Office of Research and Information, Division of Economic & Demographic Research 2/8/2021		

# N.J. Unemployment Claims

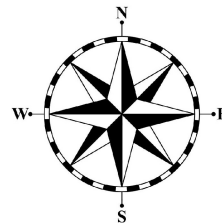
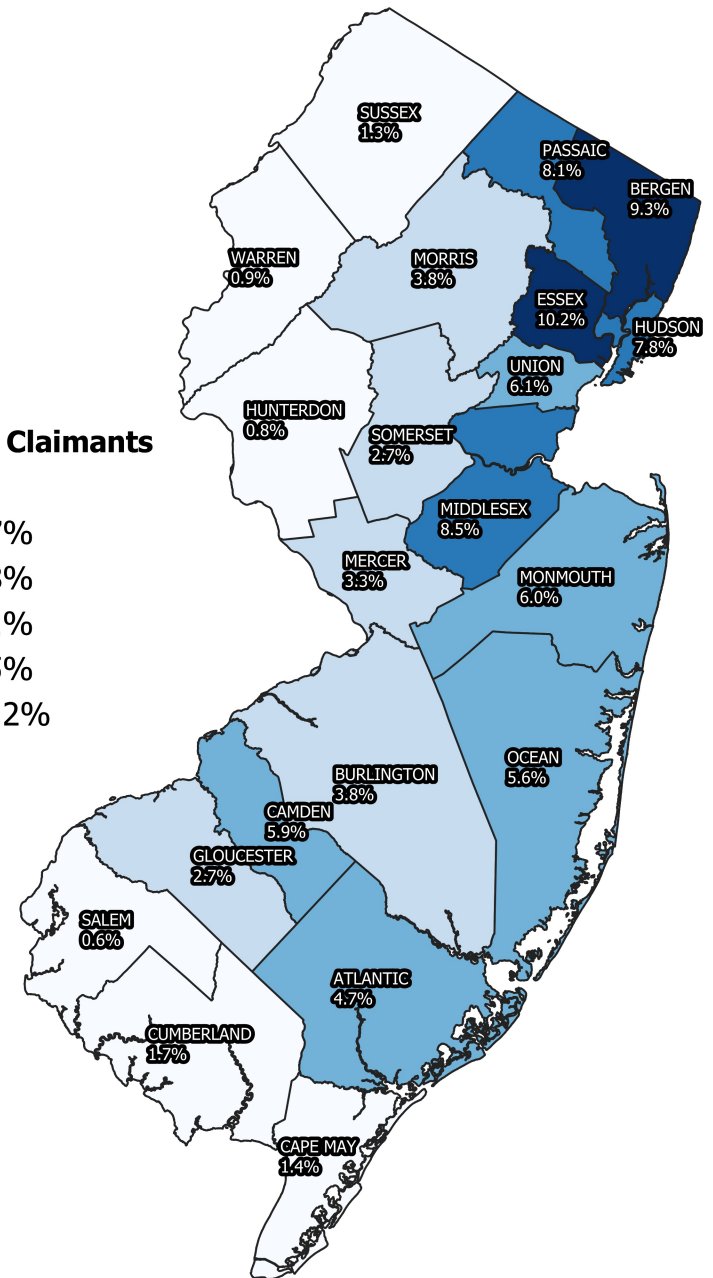
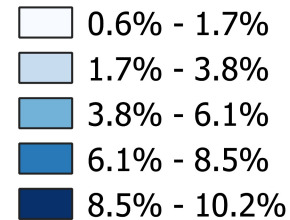
## N.J. Initial Unemployment Claims by County

### Initial Unemployment Claims 2/6/21



## N.J. UI Continued Claimants by County

### U.I. Continued Claimants 2/6/21

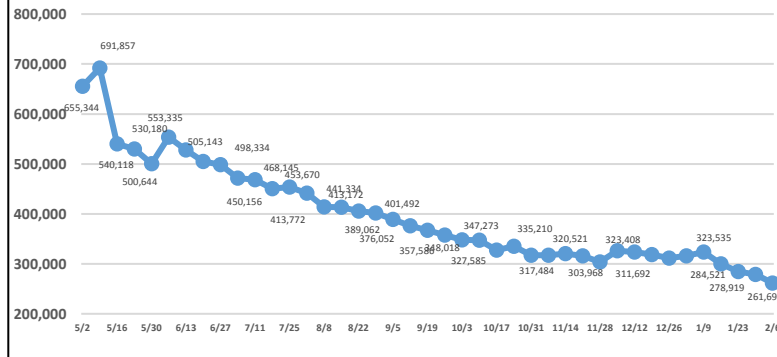


0 10 20 30 40 50 miles

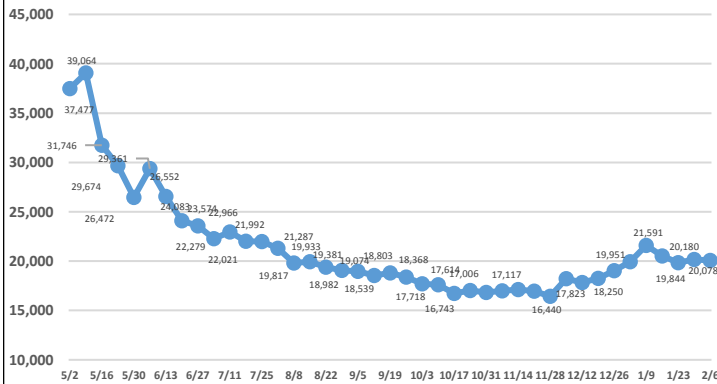
Characteristics of UI Initial Claimants Week ending February 6, 2021				
	Initial Claims	Percent		
<b>Total Claimants</b>	<b>16,134</b>	<b>100%</b>		
<b>Gender</b>	<b>16,134</b>	<b>100%</b>	<b>Age of Claimant</b>	<b>16,134</b>
Male	9,445	58.5%	Under 25	2,707
Female	6,689	41.5%	25-34	3,702
			35-44	3,013
<b>Race</b>	<b>16,134</b>	<b>100%</b>	45-54	3,007
White	9,794	60.7%	55-64	2,806
Black	2,765	17.1%	65 and over	899
Asian	811	5.0%		
Other	201	1.2%	<b>Occupation</b>	<b>16,134</b>
Chose Not To Answer	2,563	15.9%	Management	1,011
<b>Ethnicity</b>	<b>16,134</b>	<b>100%</b>	Business and financial	390
Hispanic	3,935	24.4%	Professional and related	1,734
Non-Hispanic	10,668	66.1%	Services	3,237
Chose Not To Answer	1,531	9.5%	Sales and related	1,433
<b>Educational Attainment</b>	<b>16,134</b>	<b>100%</b>	Office and admin support	1,821
Less Than High School	2,639	16.4%	Farming, fishing and forestry	96
High School Graduate	6,679	41.4%	Construction and extraction	2,843
Some College Incl'd Assoc Deg	3,687	22.9%	Installation, maint. and repair	451
Bachelors Degree and More	3,129	19.4%	Production	1,195
			Transp and material moving	1,899
			Military	24
Prepared by: Office of Research and Information, Division of Economic & Demographic Research, 2/8/2021				

Characteristics of UI Continued Claimants Week ending February 6, 2021				
	Claimants	Percent		
<b>Total Claimants</b>	<b>543,479</b>	<b>100%</b>		
<b>Gender</b>	<b>543,479</b>	<b>100%</b>	<b>Age of Claimant</b>	<b>543,479</b>
Male	263,404	48.5%	Under 25	77,267
Female	280,075	51.5%	25-34	117,479
			35-44	102,721
<b>Race</b>	<b>543,479</b>	<b>100%</b>	45-54	95,944
White	293,844	54.1%	55-64	95,878
Black	109,248	20.1%	65 and over	54,190
Asian	37,049	6.8%		
Other	6,046	1.1%	<b>Occupation</b>	<b>543,479</b>
Chose Not To Answer	97,292	17.9%	Management	36,432
		0	Business and financial	14,475
<b>Ethnicity</b>	<b>543,479</b>	<b>100%</b>	Professional and related	69,038
Hispanic	137,277	25.3%	Services	150,662
Non-Hispanic	352,712	64.9%	Sales and related	59,710
Chose Not To Answer	53,490	9.8%	Office and admin support	66,607
<b>Educational Attainment</b>	<b>543,479</b>	<b>100%</b>	Farming, fishing and forestry	1,544
Less Than High School	89,421	16.5%	Construction and extraction	29,358
High School Graduate	207,730	38.2%	Installation, maint. and repair	14,425
Some College Incl'd Assoc Deg	129,831	23.9%	Production	32,771
Bachelors Degree and More	116,497	21.4%	Transp and material moving	68,011
			Military	446
Prepared by: Office of Research and Information, Division of Economic & Demographic Research, 2/8/2021				

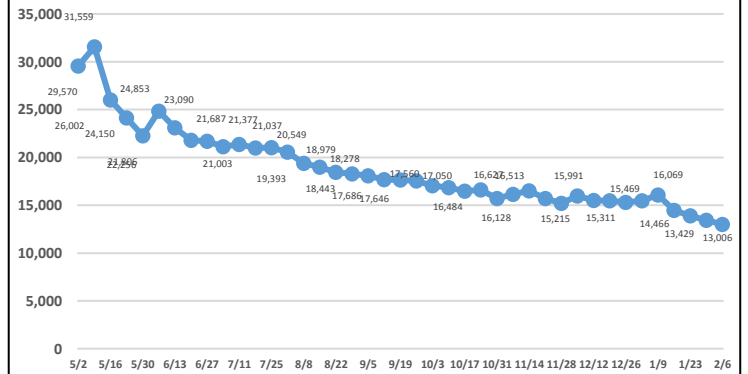
## Total Continued Claims



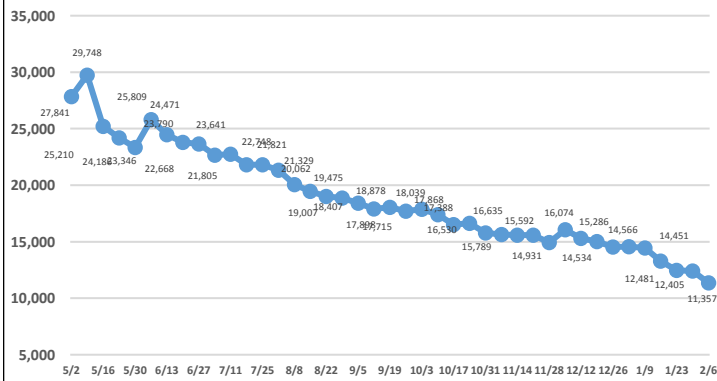
## Construction Continued Claims



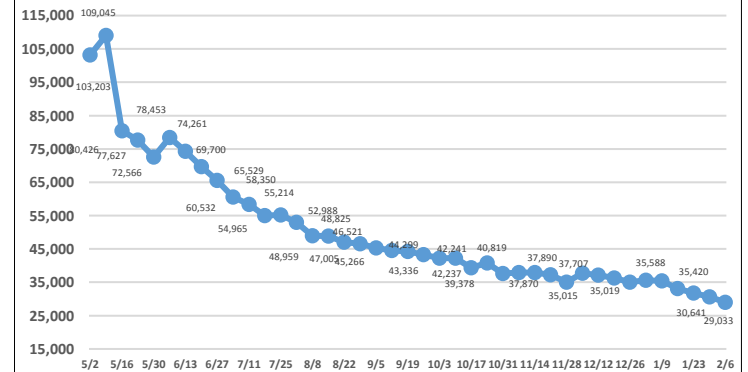
## Manufacturing Continued Claims



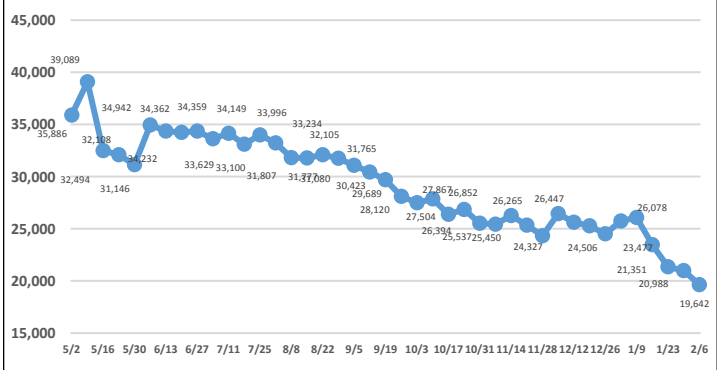
## Wholesale Trade Continued Claims



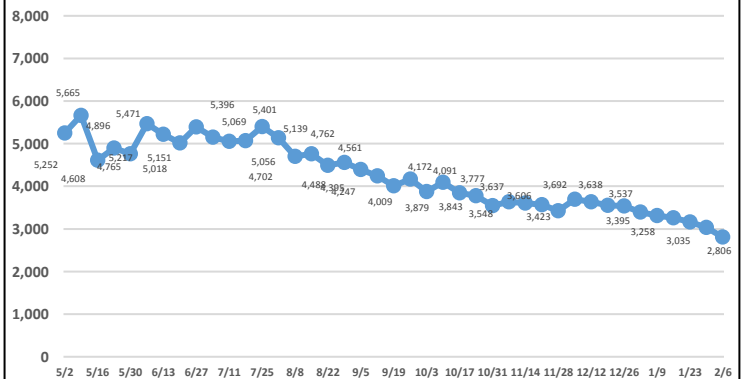
## Retail Trade Continued Claims



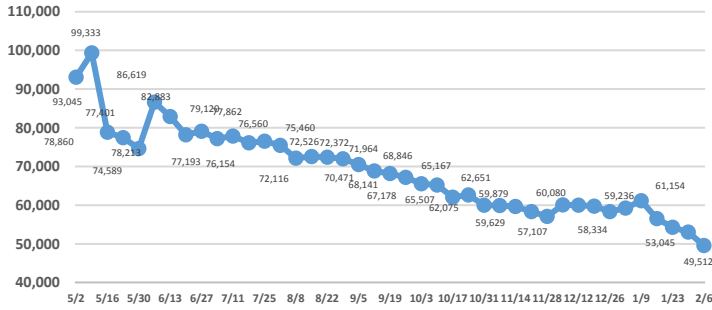
## Transportation/Warehousing Continued Claims



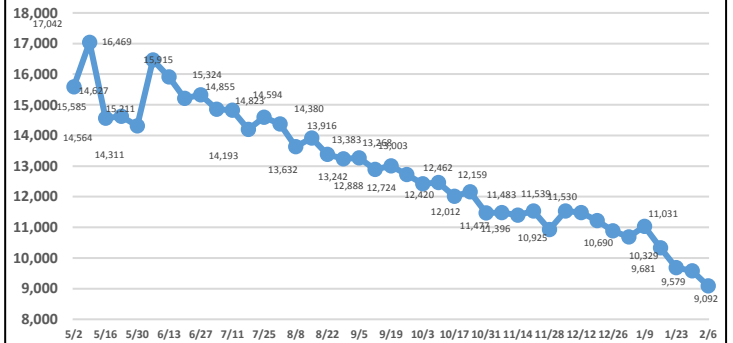
## Information Continued Claims



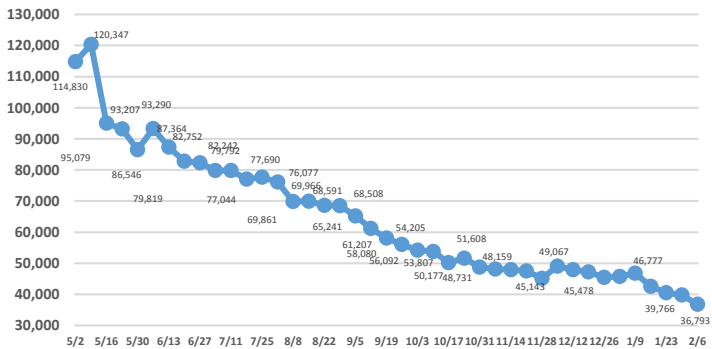
## Professional & Business Services Continued Claims



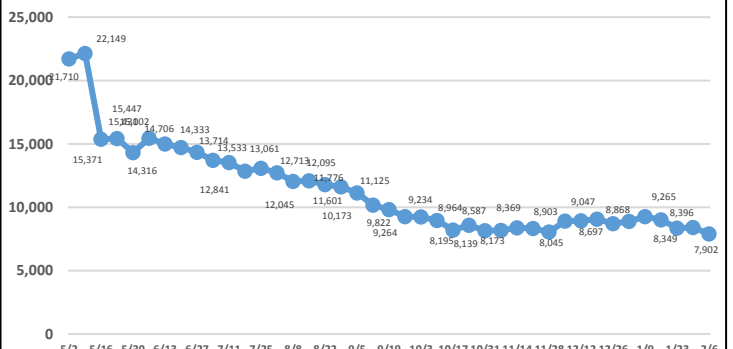
## Financial Activities Continued Claims



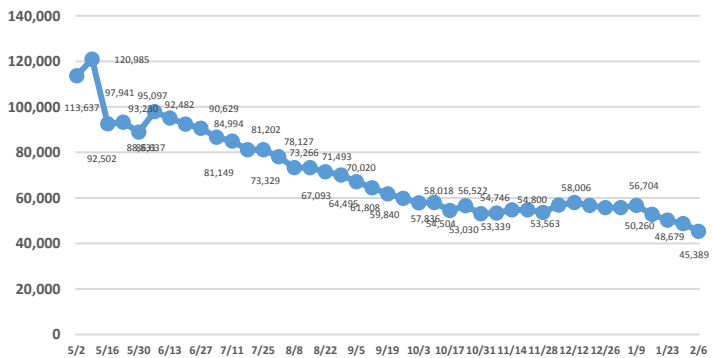
## Education & Health Services Continued Claims



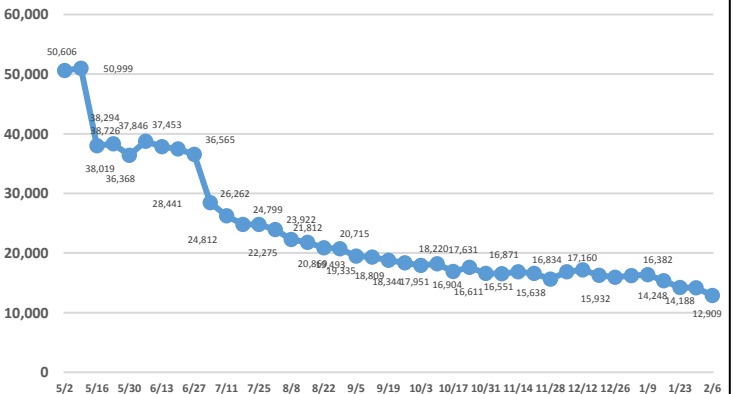
## Arts, Entertainment, Recreation Continued Claims



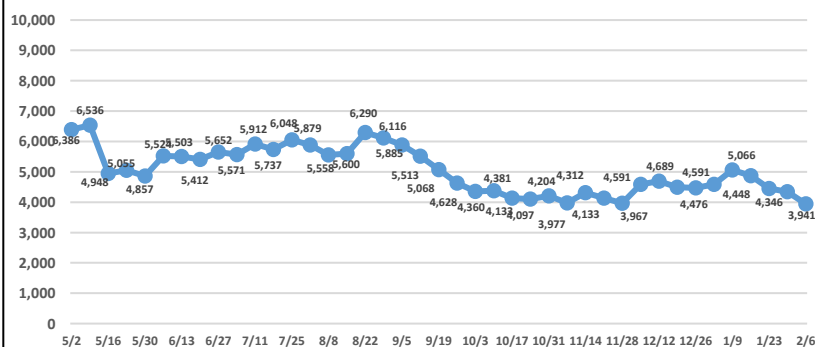
## Accommodations & Food Services Continued Claims



## Other Services Continued Claims



## Public Administration Continued Claims



Note: Industry data breakouts above do not include PUA claimants (self employed/independent contract workers).