

What's New & Upcoming in 2016



Jeff T. Behler

Regional Director, New York Regional Office
U.S. Census Bureau

New Jersey State Data Center Affiliates Meeting
June 15, 2016

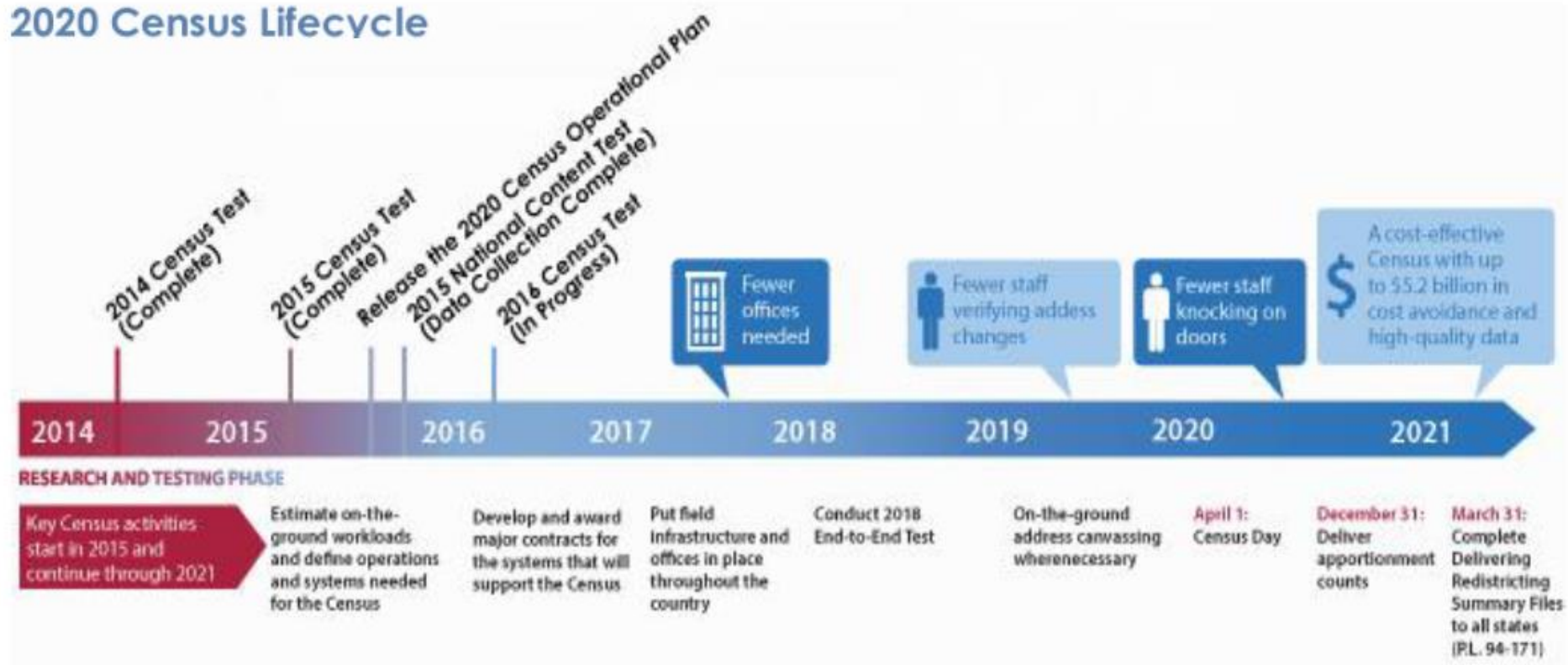
Overview

- 2020 Census Updates
 - 2020 Census Readiness
 - 2020 Geographic Partnership Programs
- American Community Survey Updates
 - 2016 Decisions
 - Data Products Redesign
 - Agility in Action – Key Action Areas
- CEDSCI/American Fact Finder Updates
 - CEDSCI Alpha Testing
 - AFF Mapping

2020 Census Readiness

Where Are We Today?

2020 Census Lifecycle



2020 Census Readiness

2016 Census Test

- Purpose: Refine technologies and methods associated with Self-Response and Nonresponse Followup operations
- April 1, 2016 Census Day
- A site test in parts of Los Angeles County, CA and Harris County, TX

Language diversity

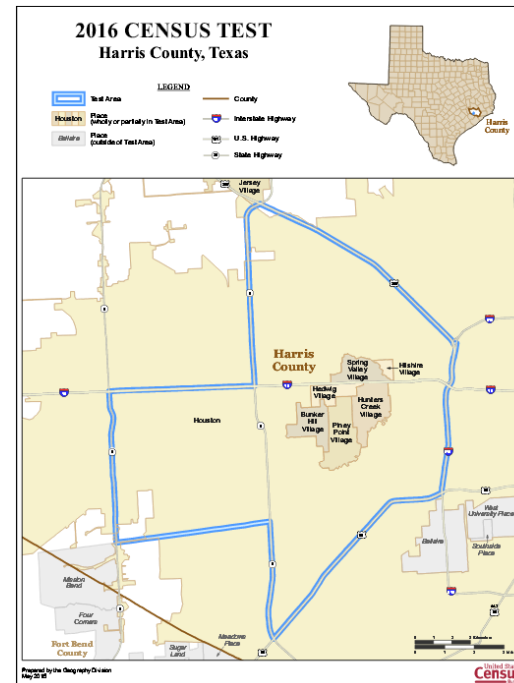
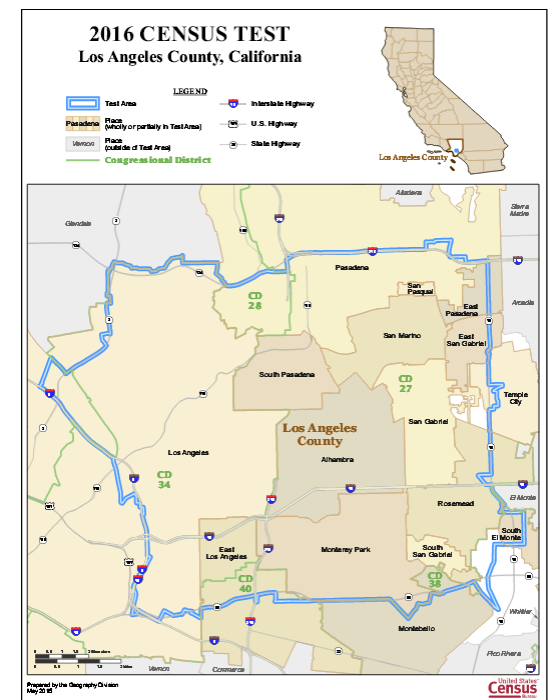
Demographic diversity

High vacancy rates

Varying level of Internet usage

Multiple locations across different time zones

Approximately 225,000 housing units in each test area



2020 Census Readiness

2016 Address Canvassing Test

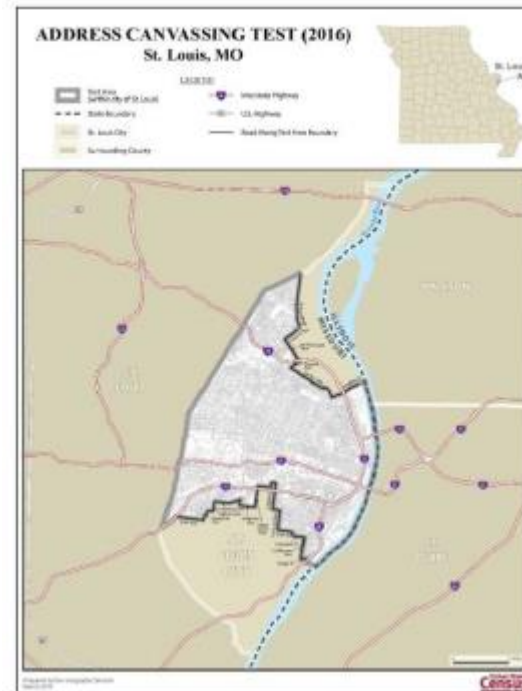
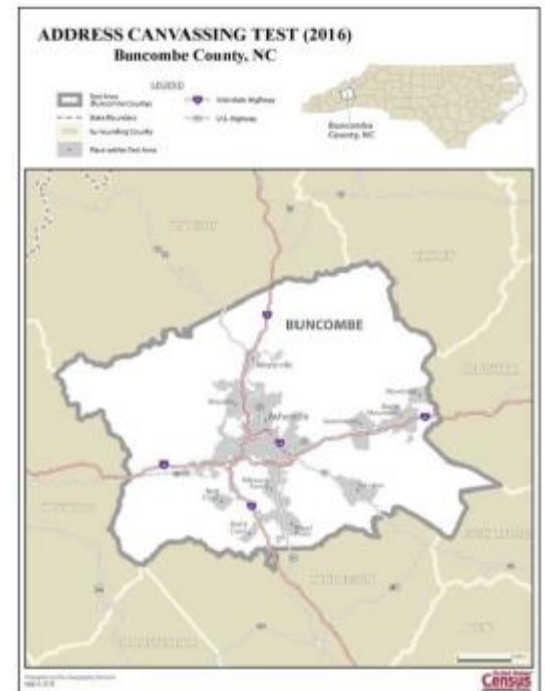
- Fall, 2016
- Two contiguous sites, approximately 12,600 blocks in total

One site is a mix of urban, suburban and rural territories

- Buncombe Co, NC

One site is a principal city of a metropolitan statistical area

- St. Louis City, MO



2020 Census Readiness

2017 Census Tests

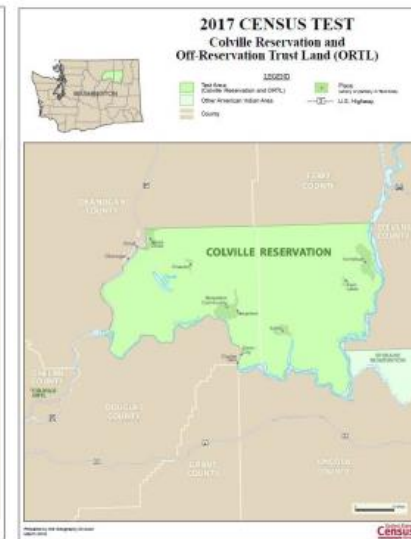
- 2017 Census Test - April 1, 2017
Census Day

Colville IR, WA and Standing Rock IR, ND-SD

A site test on tribal lands and
in areas with Update
Enumerate style addresses

Additional testing through a
nationwide self-response test

- 2017 Puerto Rico Census Test -
April 1, 2017 Census Day
Cluster of three *municipios*,
Carolina, Loíza & Trujillo Alto



2020 Census Readiness

2018 Census End-to-End Test

- April 1, 2018 Census Day

- Purpose

Test and validate 2020 Census operations, procedures, systems, and field infrastructure together to insure proper integration and conformance with functional and non-functional requirements

Produce a prototype of geographic and data products

2020 Census Readiness

Device as a Service vs. Bring Your Own Device

- Device as a Service

 - Used in 2010 Census

 - Less than optimum results

 - Standardization of hardware & software



- Bring Your Own Device (BYOD)

 - Hardware cost savings

 - Enumerator familiarity with device

 - Wide range of providers & operating systems
create logistical problems



2020 Geographic Partnership Programs

Status of 2020 Programs

- Redistricting Data Program (RDP)
 - 2016 Block Boundary Suggestion Program
- Boundary & Annexation Survey (BAS)
 - Conducted Annually Through 2021
- Local Update of Census Addresses (LUCA)
 - Invitation – mid 2017, Partner Review – early 2018
- Participant Statistical Areas Program (PSAP)
 - Materials available late 2018, Submissions due mid 2019

The 2020 Census

Key Upcoming Activities*

2016 Census Test (Census Day – 4/1) 2016 Address Canvassing Test Boundary and Annexation Survey Governmental entities receive their annual invitation to update their legal boundaries Award of Census Questionnaire Assistance Contract Award of Integrated Communications Contract 2016*	2017 Census Test (Census Day – 4/1) Topics to Congress by March 31, 2017 Local Update of Census Addresses Invitations sent to governmental entities to participate in review of our Master Address File and is complete in 2018 2017	2018 End-to-End Test (Census Day – 4/1) Question Wording to Congress by March 31, 2018** 2018
Partnership Program Launch of the partnership program Complete Count Committees Formation of committee's should be complete 2019	Advertising Begins in early 2020 Census Day – April 1, 2020 Nonresponse Follow-up Begins in late April and continues until late June/early July Apportionment Counts to the President by December 31, 2020 2020	Redistricting Counts to the States by March 31, 2021 2021

*Topic and question wording for the American Community Survey will be delivered along with the topics and question wording for the 2020 Census

Detailed 2020 Census Operational Plan available at:

<http://www2.census.gov/programs-surveys/decennial/2020/program-management/planning-docs/2020-oper-plan.pdf>

American Community Survey

2016 Decisions

- Changes resulting from the 2014 - 2015 ACS Content Review
 - Remove the question concerning business or medical office on property
 - All other questions were validated
- Changes resulting from recent survey improvement research
 - Remove the question about flush toilets
 - Reword the questions on computer and internet usage
 - Streamline our mailing procedures

American Community Survey

Data Products Redesign

- Current initiatives drive opportunity for a potential redesign of current data products
- Plan for a ground up review of all aspects of ACS dissemination
- Must include input from internal and external stakeholders

American Community Survey

Data Products Redesign Components

- Overall data product package/redesign
 - Short term & long term data product focus
- Thresholds and filtering
 - Review current and evaluate potential changes
- Dissemination methods; work closely with the Center for Enterprise Dissemination Services and Customer Innovation (CEDSCI)
- 2020 Decennial Census Tabulation Testing

American Community Survey

Data Products Redesign Group

- Contract with the Population Reference Bureau
- Forming an informal, non-advisory group
- Core group, about 16-20 external people
- Gather feedback on ACS products (tables, suppression, filtering, etc.) new dissemination tools
- Novice and experienced ACS data users

American Community Survey

Agility in Action – Key Action Areas

- Using administrative records
- Reducing follow-up contact attempts
- Testing messaging in mail materials
- Modifying survey questions
- Asking less frequently or of fewer respondents

<http://www.census.gov/programs-surveys/acs/operations-and-administration/2015-16-survey-enhancements.html>

Agility in Action: A Snapshot of Enhancements
to the American Community Survey

U.S. Census Bureau
American Community Survey Office

Revised August 2015



U.S. Department of Commerce
Economics and Statistics Administration
U.S. CENSUS BUREAU
census.gov

United States™
Census
Bureau

American Community Survey

Agility in Action – Key Action Areas (cont.)

- Leveraging a communications strategy
- Advocating for respondents
- Communicating with respondents
- Promoting awareness of data uses
- Engaging subject-matter experts

Agility in Action: A Snapshot of Enhancements to the American Community Survey

U.S. Census Bureau
American Community Survey Office

Revised August 2015



<http://www.census.gov/programs-surveys/acs/operations-and-administration/2015-16-survey-enhancements.html>

American Community Survey

2015 ACS Release Schedule

- 2015 ACS 1-Year Estimates

Release date – September 15, 2016

- 2015 ACS 5-Year Estimates

Release date – December 8, 2016

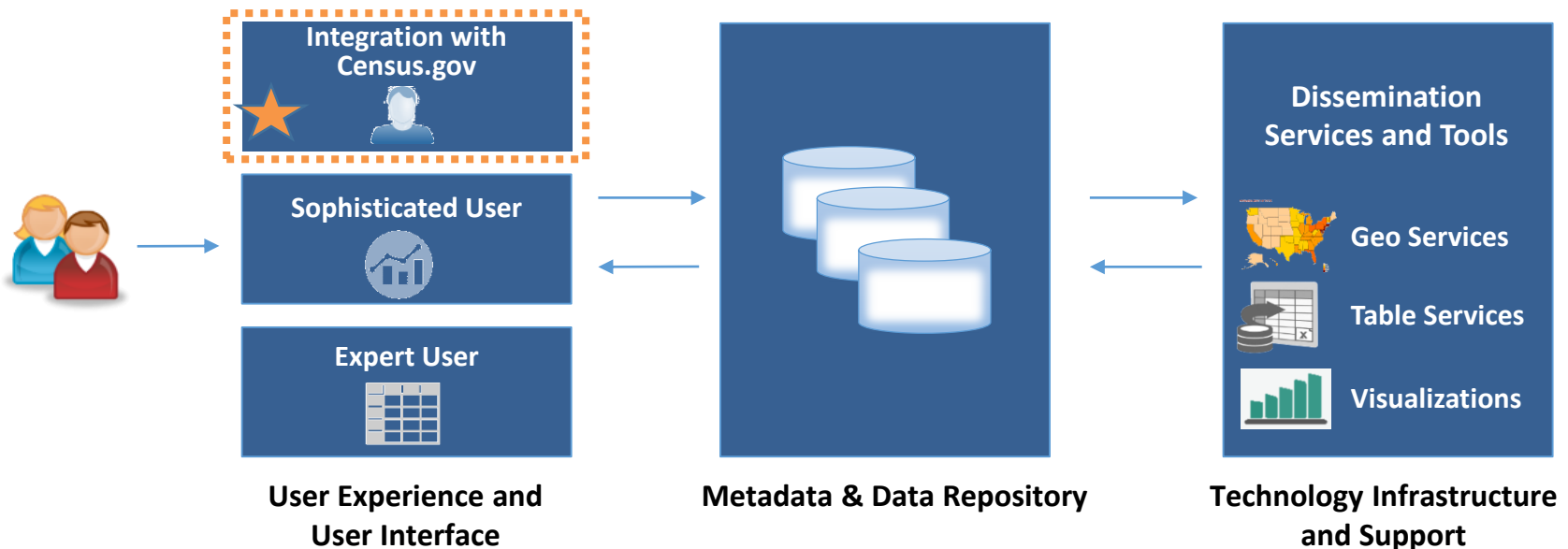
- 2014 ACS 1-Year Supplemental Estimates
& ACS 5-Year Replicate Estimates

Release date – July 21, 2016

CEDSCI

What is CEDSCI?

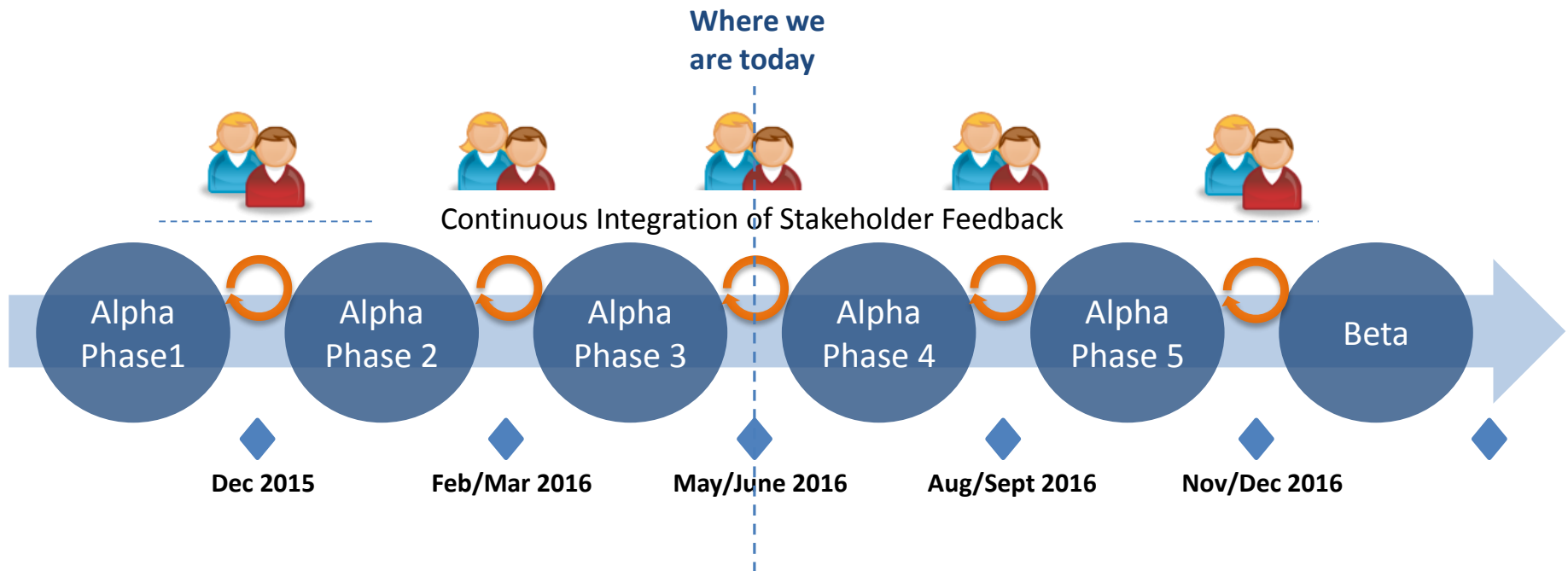
CEDSCI will establish a modernized technology platform that leverages existing innovations to provide a set of shared data dissemination services that enable consumers to do more with the massive amounts of valuable content we publish year round.



 CEDSCI Initial Release

CEDSCI

Alpha Testing



Alpha Phase 1 & 2 Key Features and Data

- Data Explorer
 - Map as a Selection
 - Faceted Filtering
 - Table View
 - Multi-select Geographies
-
- ACS 1, 3, & 5 Year Estimates
 - Econ Census – EWKS (2012)
 - County Business Patterns
 - Non Employer Statistics
 - SF1 2010



CEDSCI

Data Explorer Interface

 Explore The Data

YOUR SELECTIONS Clear Selection

Educational Attainment x Virginia (VA) x

TOPICS

Enter a topic name +

Category Popular Favorites

Back

Education (283)

- Educational Attainment (283)
- School Enrollment And Type Of School (10)

LOCATIONS

Enter a state, county or city +

Search by state, county, city, zip code and [more geographies](#). Click on the plus sign (+) to add another location.

Show Map

NAICS

112 +

Home

- 11 - Agriculture, forestry, fishing and hunting >
- 21 - Mining, quarrying, and oil and gas extraction >
- 22 - Utilities >
- 23 - Construction >
- 42 - Wholesale trade >
- 51 - Information >
- 52 - Finance and insurance >
- 53 - Real estate and rental and leasing >

YEARS

Show Less Options

DATASETS

PROGRAMS

Get Data

Search by Location

Show/Hide Map

Search by Year

Search by Dataset

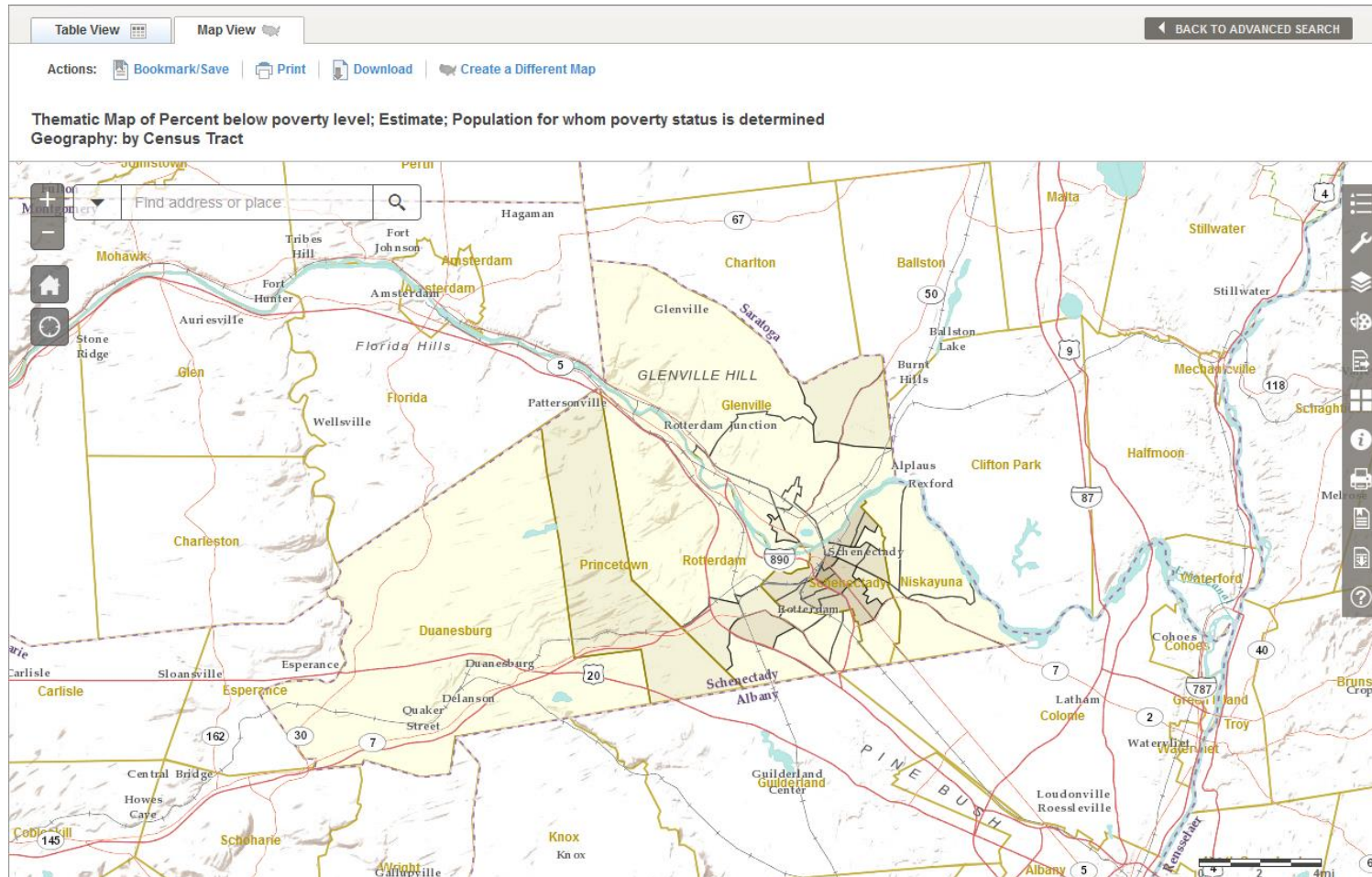
Search by Program Areas

Search by Topics

Search by NAICS Codes

Get table results that match selected facets

American Fact Finder Mapping Interface



Contact Information



U.S. Census Bureau –
New York Regional Office
Data Dissemination Branch
(212) 584-3440

http://www.census.gov/regions/new_york/